



09-32 PLAIN LINE TAMPER 73101



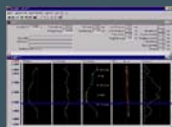
Description:

Machine Number : 73101
Machine Type: 09-32
Year Built: 1987
Manufacturer: Plasser / Theurer

Technical Comment: Worked 131 Shifts YTD. Tamping Banks last fitted 2004. TPWS & OTMR fully Commissioned.

Maximum Speed (under own power)	80 km per hour
Overall Length	27,640 mm
Total Height Above Rail Level	3,600 mm
Overall Width	2700 mm
Bogie Wheelbase	1,800 mm
Bogie Centres	13,700 mm
Wheel Diameter	730 mm
Total Weight	73 tonnes
Number of Axles	6
Number of Bogies	2
Brakes	Air Brake
Self Propelled	yes
Description of Traction	Mechanical (Working Drive Hydraulic)
Engine	Deutz (Fitted 2003)
Manning Level	2
Tamping Rate	1200 metres per hour

Upgrades:



Fastline Limited

Marshgate Depot, Friarsgate, Greyfriars Road, Doncaster, DN1 1QV
 T: +44 (0) 1302 303 555 F: +44 (0) 1302 303 564
 E: info@fastline-group.com

