



## 07-16 PLAIN LINE TAMPER 73268



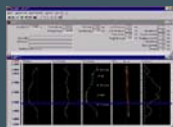
### Description:

**Machine Number :** 73268  
**Machine Type:** 07-16  
**Year Built:** 1977  
**Manufacturer:** Plasser / Theurer

**Technical Comment:** Worked 103 shifts YTD. Machine overhauled in 2001, New Gearbox 2005, Tamping banks 2004. TPWS & OTMR Fully commissioned.

<b>Maximum Speed (under own power)</b>	80 km per hour
<b>Overall Length</b>	18,600 mm
<b>Total Height Above Rail Level</b>	3,680 mm
<b>Overall Width</b>	2,700 mm
<b>Bogie Wheelbase</b>	1,500 mm
<b>Bogie Centres</b>	11,000 mm
<b>Wheel Diameter</b>	710 mm
<b>Total Weight</b>	42,350 kg
<b>Number of Axles</b>	4
<b>Number of Bogies</b>	2
<b>Brakes</b>	Air Brake and Direct Brake
<b>Self Propelled</b>	yes
<b>Description of Traction</b>	Mechanical (Working Drive Hydraulic)
<b>Engine</b>	Cummins NT855 (Fitted 2001)
<b>Manning Level</b>	3
<b>Tamping Rate</b>	600 metres per hour

### Upgrades:



### Fastline Limited

Marshgate Depot, Friarsgate, Greyfriars Road, Doncaster, DN1 1QV  
 T: +44 (0) 1302 303 555 F: +44 (0) 1302 303 564  
 E: info@fastline-group.com

