



07-32 PLAIN LINE TAMPER 73428



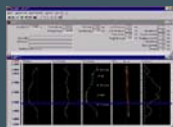
Description:

Machine Number : 73428
Machine Type: 07-32
Year Built: 1978
Manufacturer: Plasser / Theurer

Technical Comment: Worked 178 shifts YTD. Re-hosed. Cummins Engine. New Tamping Banks 2004. TPWS & OTMR Fully commissioned.

Maximum Speed (under own power)	80 km per hour
Overall Length	18,600 mm
Total Height Above Rail Level	3,680 mm
Overall Width	2,700 mm
Bogie Wheelbase	1,500 mm
Bogie Centres	11,000 mm
Wheel Diameter	710 mm
Total Weight	44,000kg
Number of Axles	4
Number of Bogies	2
Brakes	Air Brake and Direct Brake
Self Propelled	yes
Description of Traction	Mechanical (Working Drive Hydraulic)
Engine	Cummins NT855 (Fitted 2002)
Manning Level	3
Tamping Rate	600 metres per hour

Upgrades:



Fastline Limited

Marshgate Depot, Friarsgate, Greyfriars Road, Doncaster, DN1 1QV
 T: +44 (0) 1302 303 555 F: +44 (0) 1302 303 564
 E: info@fastline-group.com

