



## 07-32 SUPER TAMPER 73433



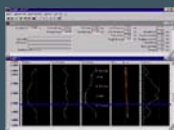
### Description:

**Machine Number :** 73433  
**Machine Type:** 07-32  
**Year Re-built:** 2004  
**Manufacturer:** Plasser / Theurer

**Technical Comment:** Machine overhauled in 2004. TPWS & OTMR Fully Commissioned. Machine fitted with Siemens PLC system and on board self monitoring SCADA system. Machine is more sophisticated than an original equipment manufacturer new machine.

Maximum Speed (under own power)	80 km per hour
Overall Length	18,600 mm
Total Height Above Rail Level	3,680 mm
Overall Width	2,700 mm
Bogie Wheelbase	1,500 mm
Bogie Centres	11,000 mm
Wheel Diameter	710 mm
Total Weight	44,000kg
Number of Axles	4
Number of Bogies	2
Brakes	Air Brake
Self Propelled	yes
Description of Traction	Mechanical (Working Drive Hydraulic)
Engine	Cummins NT855 (Fitted 2004)
Manning Level	2
Tamping Rate	1200 metres per hour

### Upgrades:



### Fastline Limited

Marshgate Depot, Friarsgate, Greyfriars Road, Doncaster, DN1 1QV  
 T: +44 (0) 1302 303 555 F: +44 (0) 1302 303 564  
 E: info@fastline-group.com

