



## 08-275 S & C TAMPER 73902



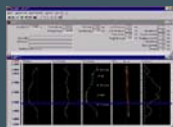
### Description:

**Machine Number :** 73902  
**Machine Type:** 08-275  
**Year Built:** 1987  
**Manufacturer:** Plasser / Theurer

**Technical Comment:** Worked 128 shifts YTD. TPWS & OTMR. Fully Commissioned.  
 New Tamping Banks 2004

<b>Maximum Speed (under own power)</b>	80 km per hour
<b>Overall Length</b>	25,940 mm
<b>Total Height Above Rail Level</b>	3,620 mm
<b>Overall Width</b>	2,700 mm
<b>Bogie Wheelbase</b>	1,800 mm
<b>Bogie Centres</b>	12,000 mm
<b>Wheel Diameter</b>	730 mm
<b>Total Weight</b>	58,420kg
<b>Number of Axles</b>	5
<b>Number of Bogies</b>	2
<b>Brakes</b>	Air Train Brake and Direct Brake
<b>Self Propelled</b>	yes
<b>Description of Traction</b>	Power Shift Transmission
<b>Engine</b>	Deutz (Fitted 1997)
<b>Manning Level</b>	3

### Upgrades:



### Fastline Limited

Marshgate Depot, Friarsgate, Greyfriars Road, Doncaster, DN1 1QV  
 T: +44 (0) 1302 303 555 F: +44 (0) 1302 303 564  
 E: info@fastline-group.com

