



08-4X4 S & C TAMPER 73941



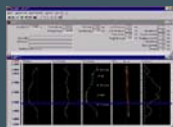
Description:

Machine Number : 73941
Machine Type: 08-4x4/4S-RT
Year Built: 2004
Manufacturer: Plasser / Theurer

Technical Comment: New 08-4x4 Tamper. Worked 58 shifts YTD. TPWS & OTMR. Fully Commissioned. Lifting Capacity = 29.4 tonnes. Sluicing Capacity = 20.14 tonnes. Hours Based Maintenance.

Maximum Speed (under own power)	100 km per hour
Overall Length	30,700 mm
Total Height Above Rail Level	3,820 mm
Overall Width	2,770 mm
Bogie Wheelbase	1,800 mm
Bogie Centres	(1-2) 14,000 mm & (2-3) 9,000 mm
Wheel Diameter	920 mm
Total Weight	98,600kg
Number of Axles	6
Number of Bogies	3
Brakes	Air Train Brake and Direct Brake
Self Propelled	yes
Description of Traction	Power Shift Transmission
Engine	Deutz
Manning Level	3

Upgrades:



Fastline Limited

Marshgate Depot, Friarsgate, Greyfriars Road, Doncaster, DN1 1QV
 T: +44 (0) 1302 303 555 F: +44 (0) 1302 303 564
 E: info@fastline-group.com

