



08-16/90 S & C TAMPER 75001

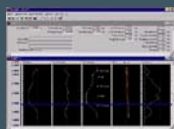
Description:

Machine Number : 75001
Machine Type: 08-16/90
Year Built: 1991
Manufacturer: Plasser / Theurer

Technical Comment: Machine Service Stored TPWS Commissioned. Hydraulic Drive.

Maximum Speed (under own power)	80 km per hour
Overall Length	14,870 mm
Total Height Above Rail Level	3,600 mm
Overall Width	2700 mm
Wheel Diameter	920 mm
Total Weight	35,060kg
Number of Axles	2
Axle centres	9,000 mm
Brakes	Air Train Brake and Direct Brake
Self Propelled	yes
Description of Traction	Power Shift Transmission
Engine	Rolls Royce C6TFL
Manning Level	3

Upgrades:



Fastline Limited

Marshgate Depot, Friarsgate, Greyfriars Road, Doncaster, DN1 1QV
T: +44 (0) 1302 303 555 F: +44 (0) 1302 303 564
E: info@fastline-group.com

